



**SHERIFF
R. Holland**

**MAJOR
A. Shields**

**Administrative
Unit**

Staff Attorney B. Welch

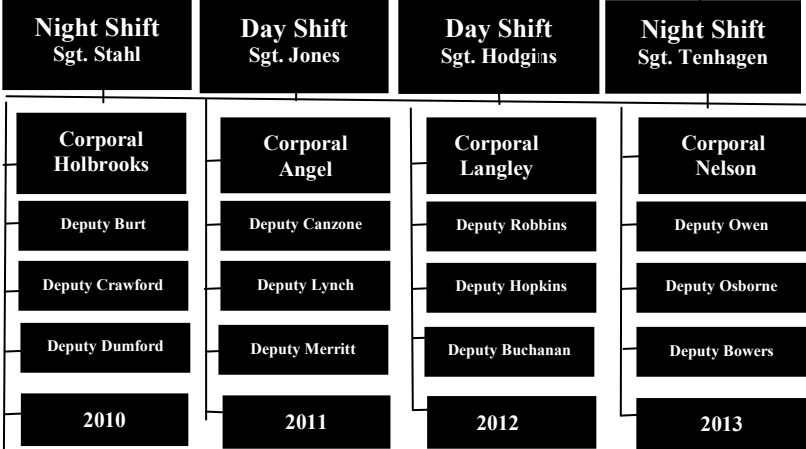
Administrative Officer S. Hughes

Interpreter / Admin. Asst. J. Alonso

Patrol

Lieutenant
K. Lane

Unit First Sgt.
C. Bryson



Part-Time Deputies



**CHS &
Civil Process**

Lieutenant
M. Trammel

- Unit Sgt. A. Wishon
- J. Parrish
- L. Dulakis
- A. Wright

- J. Phillips Traffic
- Deputy-K9 Blanton
- Deputy J. Stewart

Part-Time Admin. Asst.

Part-Time Admin. Asst.

**Criminal
Investigations**

Lieutenant
C. Moody

- Juv. Detective A. Stewart
- Detective T. Corbin
- Detective W. Roden
- Narcotics C. Murray
- Narcotics K. Cope
- Narcotics T. Bradley

Unit Sargent
Sgt. D. Willis

- Detective T. Holland
- Dom. Violence Det. S. Pellicer
- Juv. Detective D. Burrows
- MMS SRO D. Seagle
- FHS SRO J. Wright
- FHS-SRO T. Burt
- Mtn View-SRO B. Holland
- 2013 Requested Union Academy
- 2013 Requested Nantahala

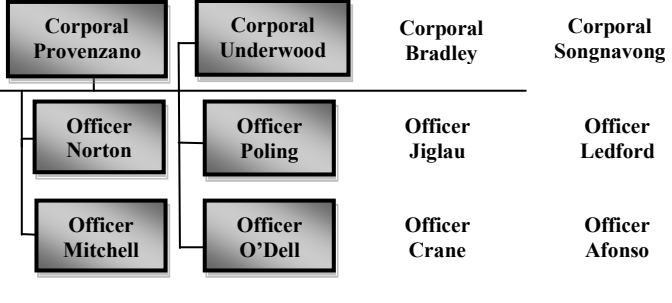
Detention

Lieutenant
S. Stewart

Unit SGT.
D. Hampton

- Physician
- Medical Officer S. Marion

Administrative Officer
L. Sharpe
Support Services
Coordinator
J. Lau



Part-Time
Detention Officers